



FRIENDSHIP

Location details of the plantation areas



Friendship Regional Office
Shyamnagar, Satkhira

GPS location and approximate area for mangrove plantation

Date: 22/11/2020

Sl. No.	Village	Union	Upazila	District	GPS location			Approximate Land Area (ha)
					South	Middle	North	
01	Chandipur	Padmapukur	Shyamnagar	Satkhira	22.315556, 89.266766	22.319552, 89.263528	22.326533, 89.256896	7
02	Jhapa				22.290442, 89.244109	22.291117, 89.237726	22.292448, 89.234314	4
03	Chandnimukha	Gabura			22.221122, 89.289884	22.221112, 89.284392	22.221301, 89.279038	7
04	Napitkhali				22.220295, 89.302671	22.226677, 89.305700	22.232020, 89.307695	16
05	Parshwemari				22.240454, 89.299073	22.242956, 89.295779	22.247902, 89.289780	7
06	Mirgang	Munshigonj			22.185565, 89.124108	22.185029, 89.125219	22.185650, 89.127375	4
07	Kolyanpur	Protapnagar	Assasuni	22.398942, 89.192930	22.400659, 89.197525	22.408634, 89.211944	11	
08	Horishkhali			22.371740, 89.194125	22.368002, 89.195585	22.373716, 89.210133	6	
09	Chakla			22.345991, 89.273674	22.352391, 89.271507	22.356225, 89.268783	5	
						TOTAL:	67	

The above-mentioned 9 plantation areas are tagged in blue on a Google Map that can be found via this link:

<https://www.google.com/maps/d/viewer?mid=1Sxf6vztPqIIPxj4DEA6C77GghEkZdezL&ll=22.39210915635892%2C89.18340510000003&z=10>

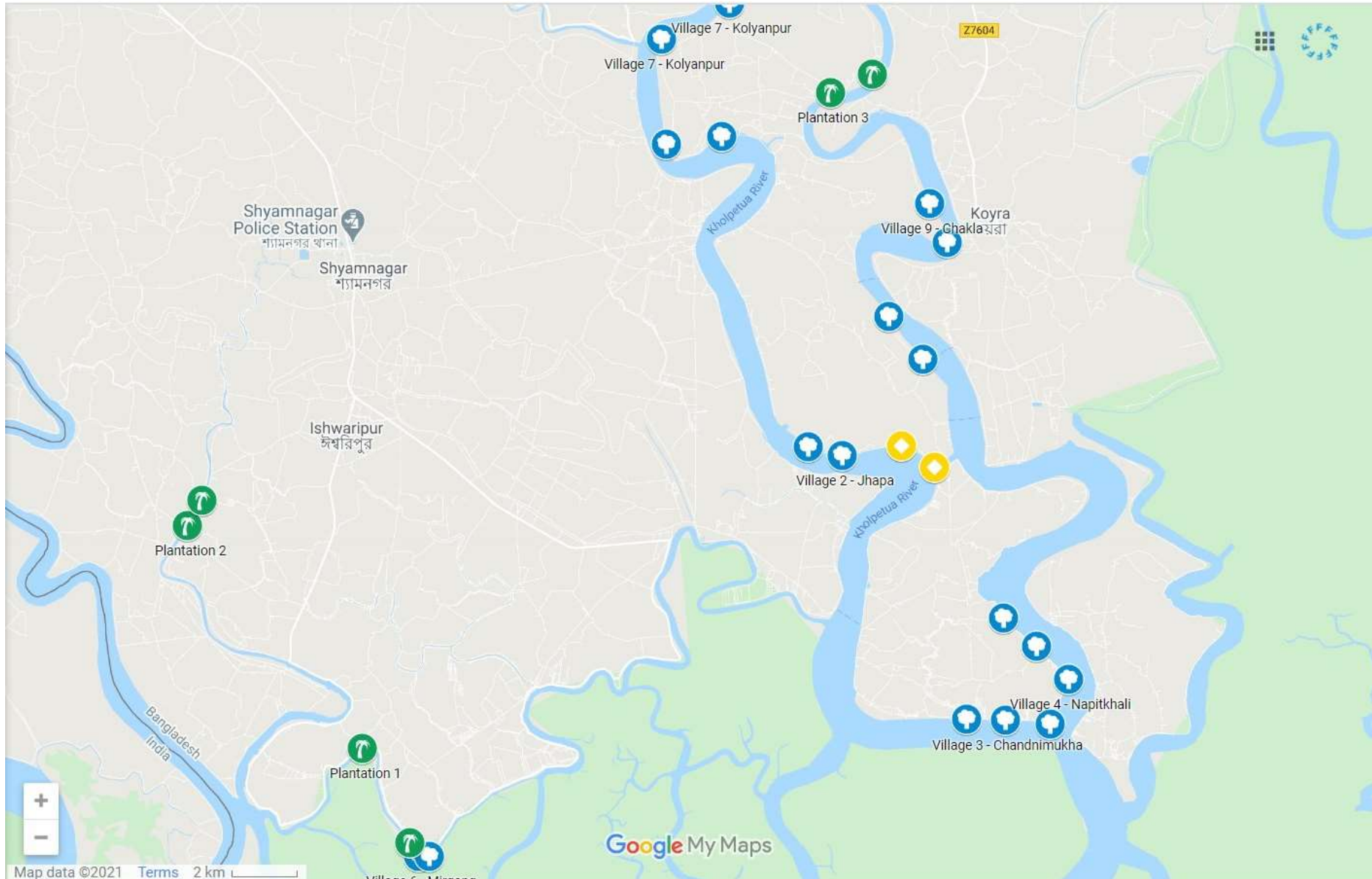
For each plantation area, North and South coordinates are indicated.

On this map, another plantation zone dedicated to another donor is tagged in yellow and plantations already done or being done are in green.



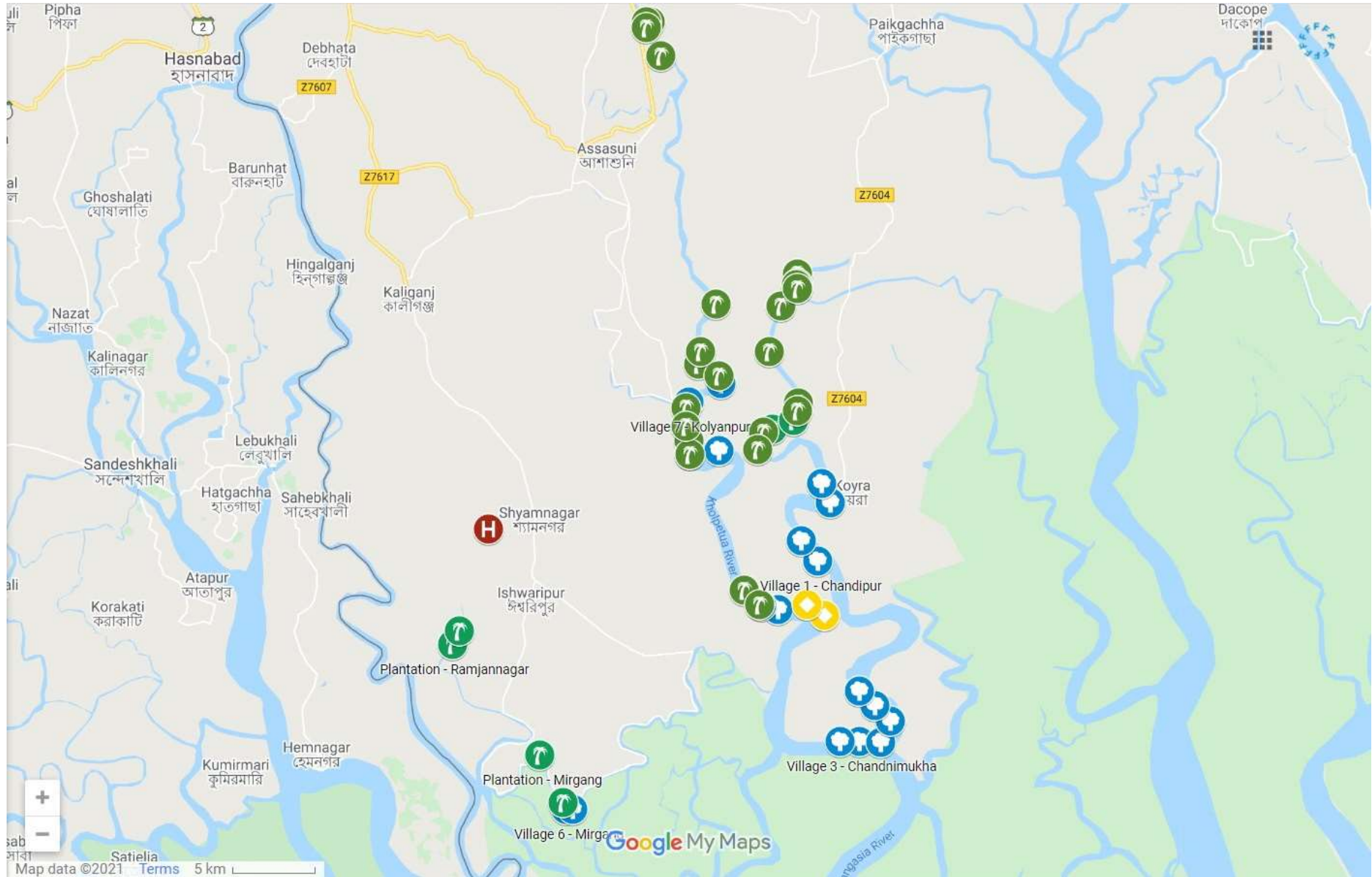
FRIENDSHIP

General map of the Satkhira District with landmarks indicating the plantation areas





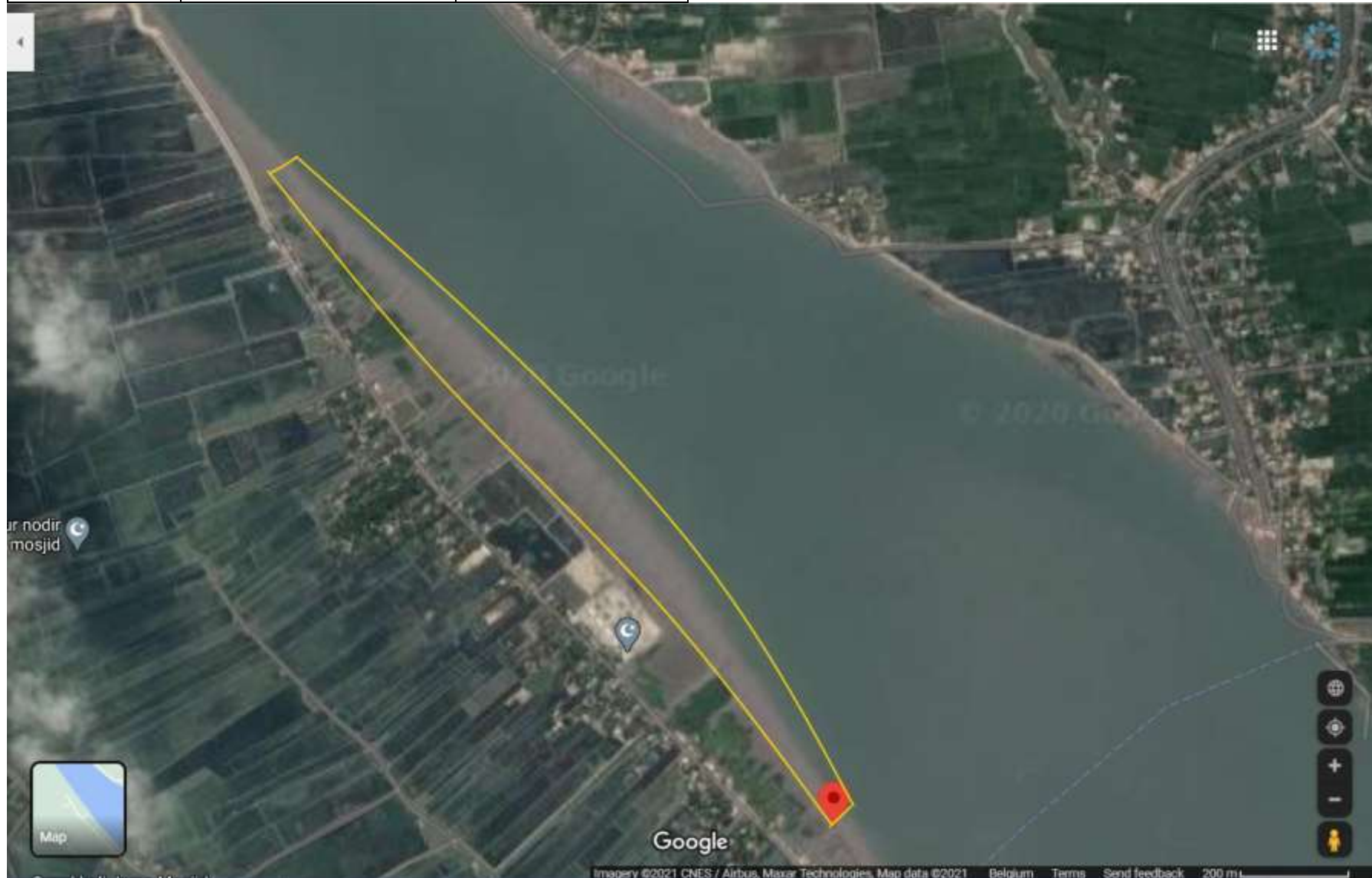
FRIENDSHIP





FRIENDSHIP

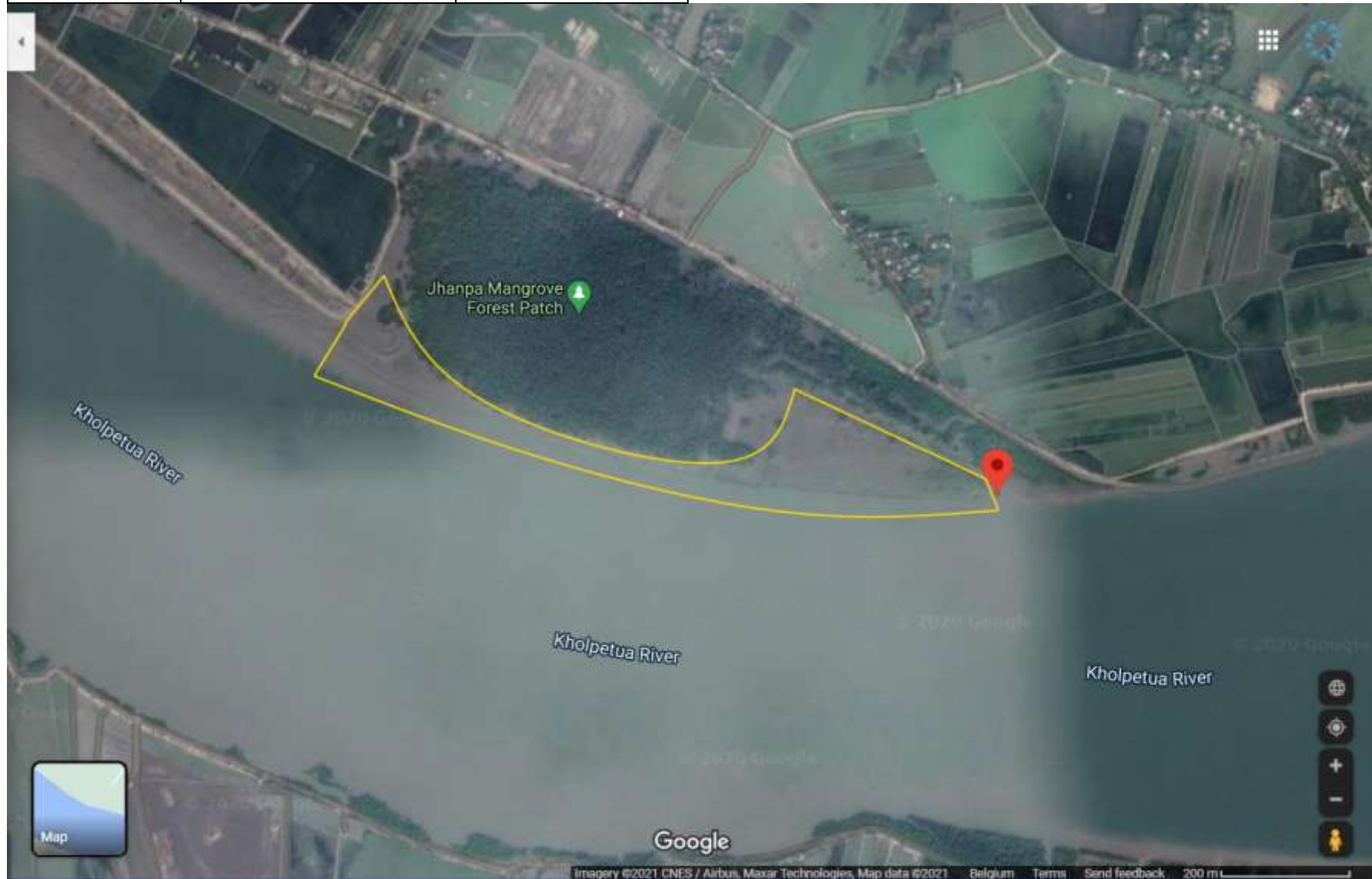
Village 1	Approximate surface (ha)	Estimated length (m)
Chandipur	7	1.588





FRIENDSHIP

Village 2	Approximate surface (ha)	Estimated length (m)
Jhapa	4	1.032





FRIENDSHIP

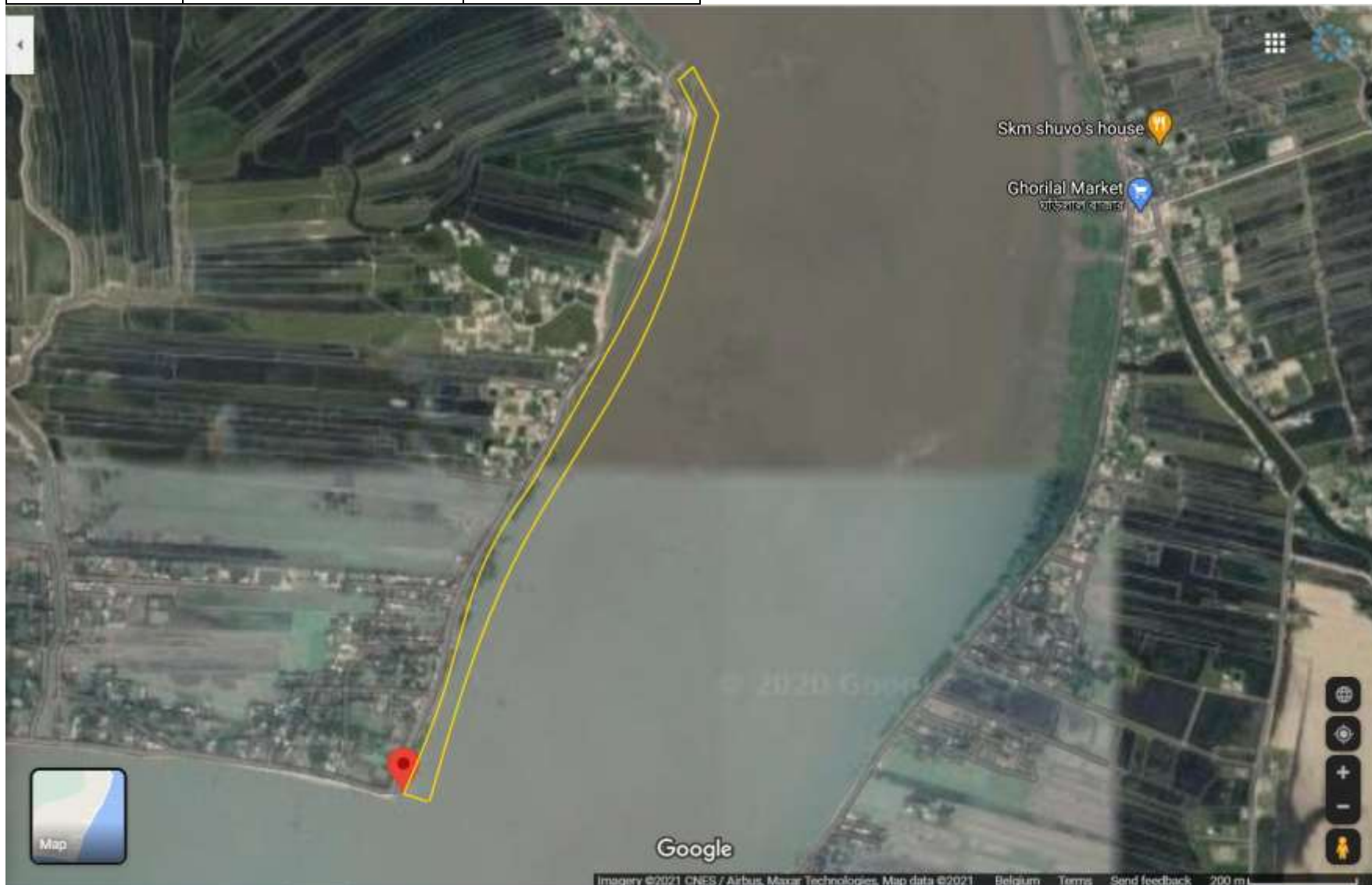
Village 3	Approximate surface (ha)	Estimated length (m)
Chandnimukha	7	1.117





FRIENDSHIP

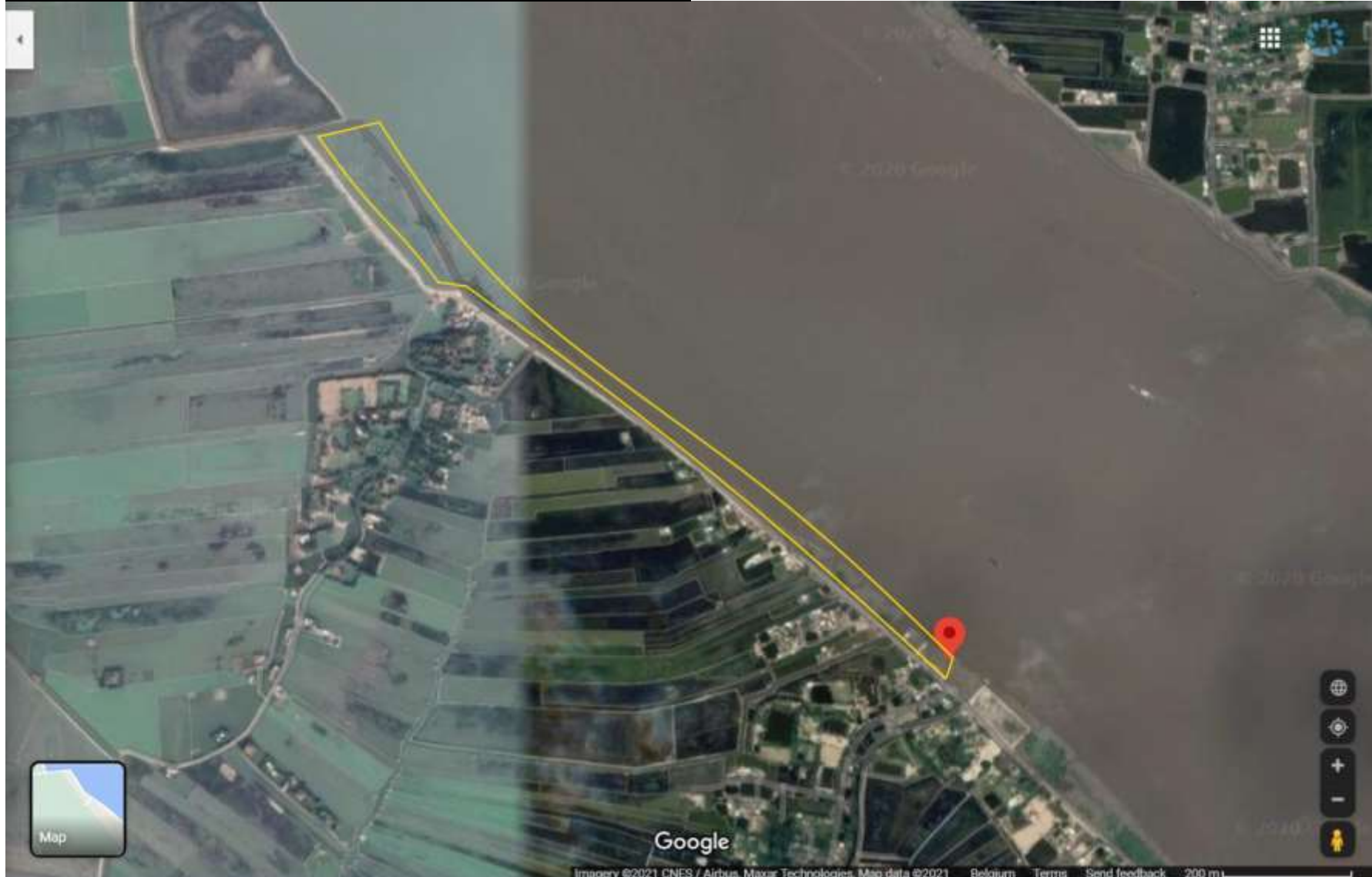
Village 4	Approximate surface (ha)	Estimated length (m)
Napitkhali	16	1.403





FRIENDSHIP

Village 5	Approximate surface (ha)	Estimated length (m)
Parshwemari	7	1.265





FRIENDSHIP

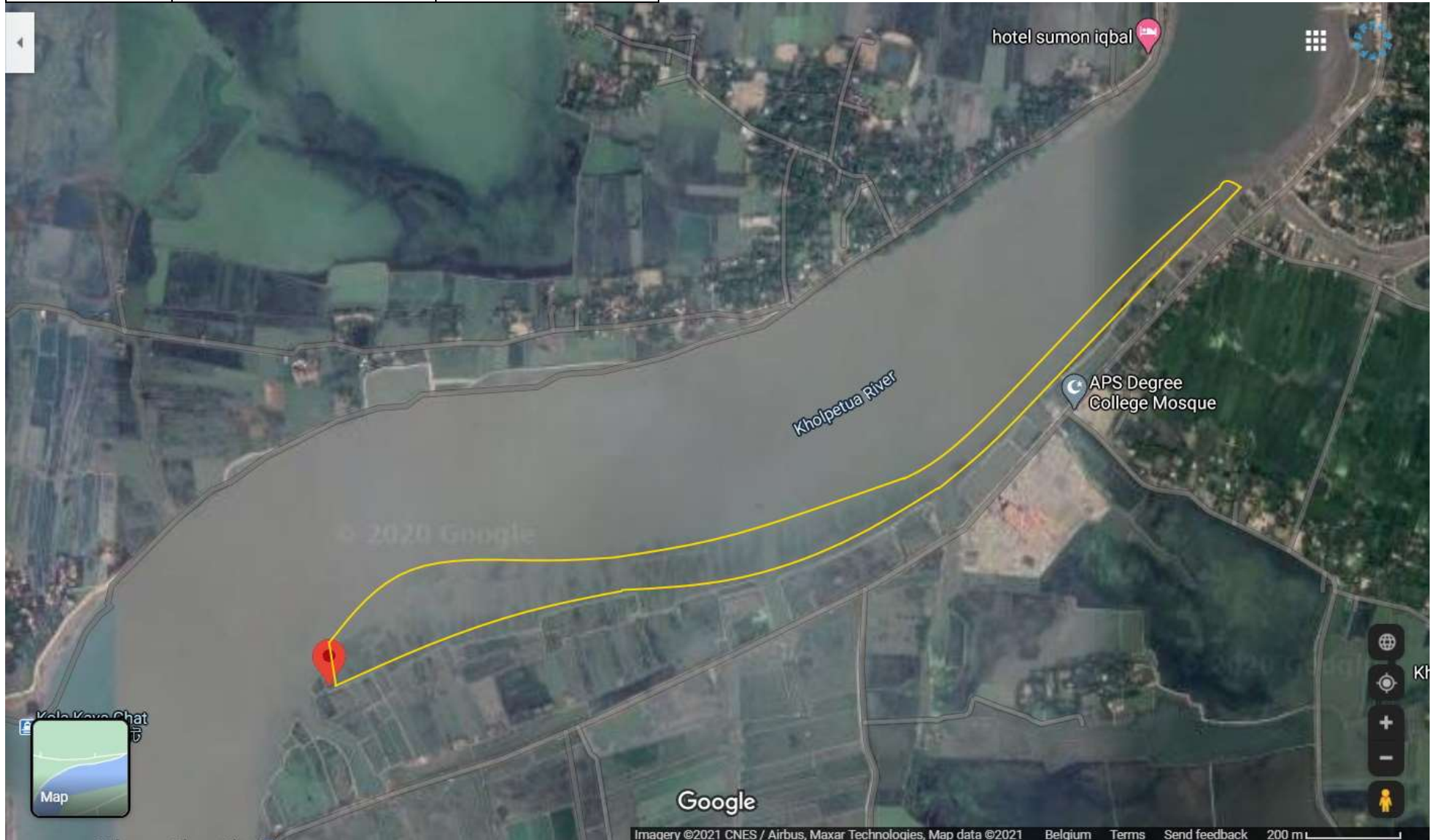
Village 6	Approximate surface (ha)	Estimated length (m)
Mirgang	4	337





FRIENDSHIP

Village 7	Approximate surface (ha)	Estimated length (m)
Kolyanpur	11	2.232





FRIENDSHIP

Village 8	Approximate surface (ha)	Estimated length (m)
Horishkhali	6	1.661





FRIENDSHIP

Village 9	Approximate surface (ha)	Estimated length (m)
Chakla	5	1.244

