

Location details of each plantation area

Friendship Regional Office,
Shyamnagar, Satkhira

GPS location and approximate land area for the Mangrove Plantation Project 2020-2025

Date: 19/01/2020

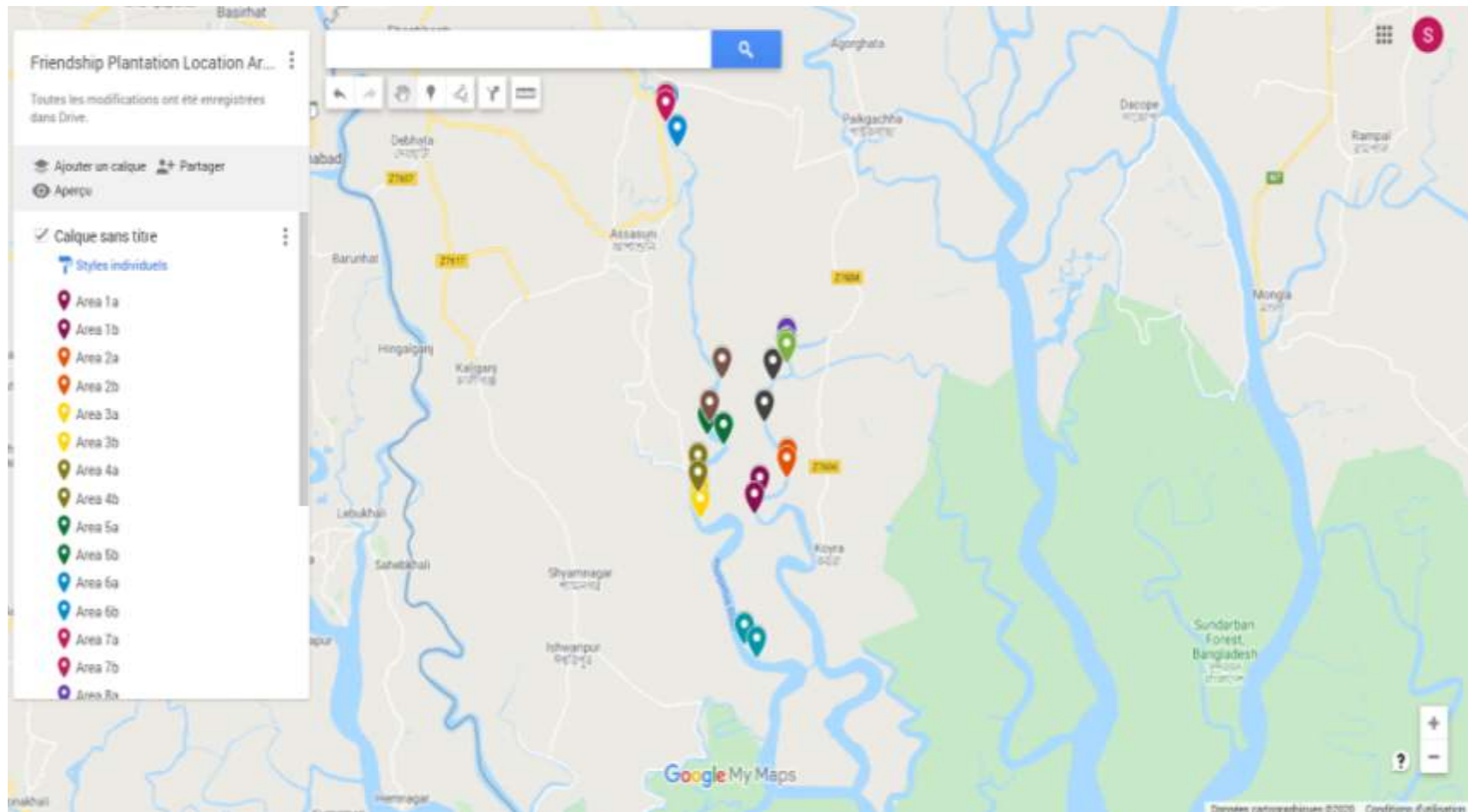
Sl. No.	Village	Union	Upazila	District	GPS locations			Approximate Land Area (ha)
					North	Middle	South	
01	Kurikaunia	Protapnagar	Assasuni	Satkhira	22.383051, 89.236032	22.379048, 89.232719	22.374239, 89.232673	2
02	Gokulnagar				22.398384, 89.255747	22.396572, 89.255490	22.394443, 89.255073	4
03	Madarbaria				22.378490, 89.192966	22.374441, 89.193520	22.371938, 89.194071	8
04	Kollyanpur				22.395699, 89.191737	22.390329, 89.191781	22.386547, 89.192127	6
05	Kola				22.418770, 89.198961	22.415850, 89.203011	22.412970, 89.210361	6
06	Monohoroer	Kulya			22.598347, 89.170893	22.592390, 89.170306	22.580211, 89.177555	7
07	Daspara	Budhata			22.597903, 89.169286	22.595388, 89.169298	22.595123, 89.168976	5
08	Khajra Pirojpur	Khajra			22.466147, 89.254972	22.463330, 89.254545	22.461022, 89.254927	4
09	Kakbasia	Anulia			22.450102, 89.209297	22.440730, 89.202673	22.425807, 89.199844	6
10	Aksora		22.449128, 89.245171	22.435550, 89.239279	22.425664, 89.238943	5		
11	Bholanathpur		22.460529, 89.254173	22.459810, 89.254301	22.458885, 89.254784	2		
12	South Jhapa	Padmapukur	Shyamnagar		22.300635, 89.225047	22.298625, 89.227143	22.292954, 89.234035	5
							TOTAL	60

All the plantation areas are tagged on a Google Map that can be found via this link:

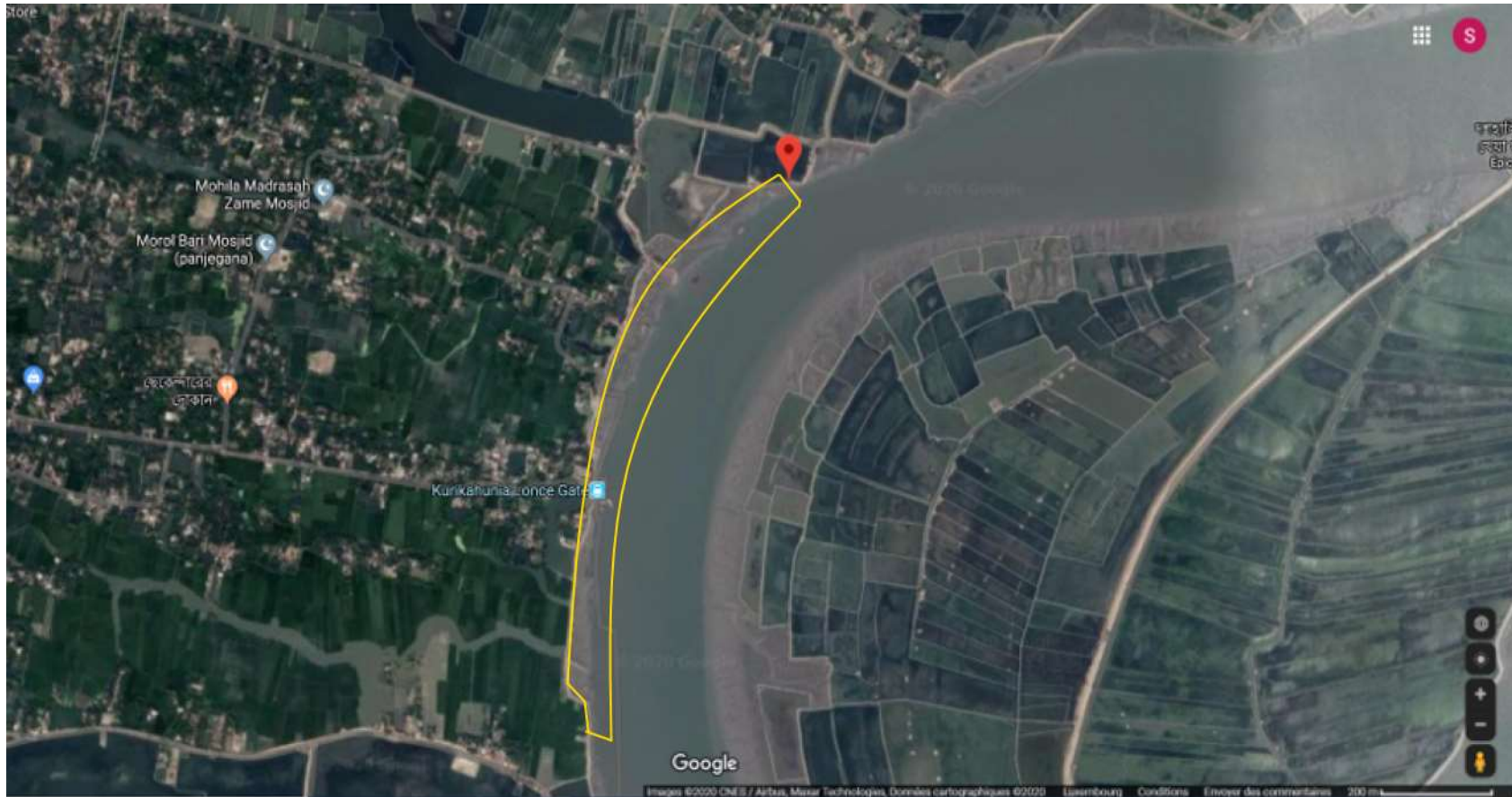
https://www.google.com/maps/d/edit?hl=fr&hl=fr&mid=1WgFP3l7D2p_71SrMzzVvJhNoH7jLo0l8&ll=22.417600525157216%2C89.1984485120314&z=13

For each area, North and South coordinates are indicated.

General map of the Satkhira District with landmarks indicating the plantation areas



Area 1	Approximate surface (ha)	Estimated length (m)
Kurikaunia	2	1039



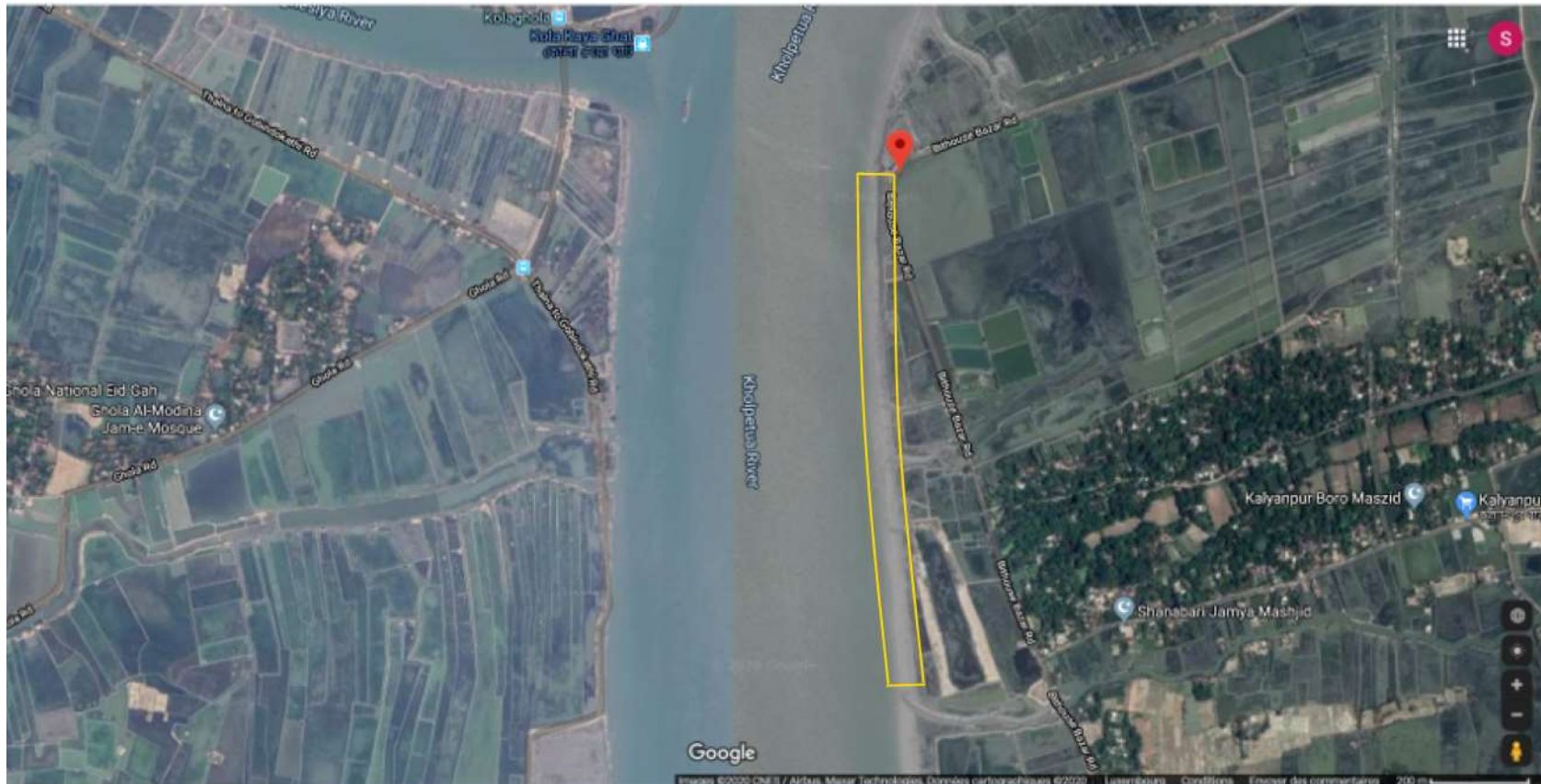
Area 2	Approximate surface (ha)	Estimated length (m)
Gokulnagar	4	444



Area 3	Approximate surface (ha)	Estimated length (m)
Madarbaria	8	737



Area 4	Approximate surface (ha)	Estimated length (m)
Kollyanpur	6	1018



Area 5	Approximate surface (ha)	Estimated length (m)
Kola	6	1338



Area 6	Approximate surface (ha)	Estimated length (m)
Monohoroer	7	2129



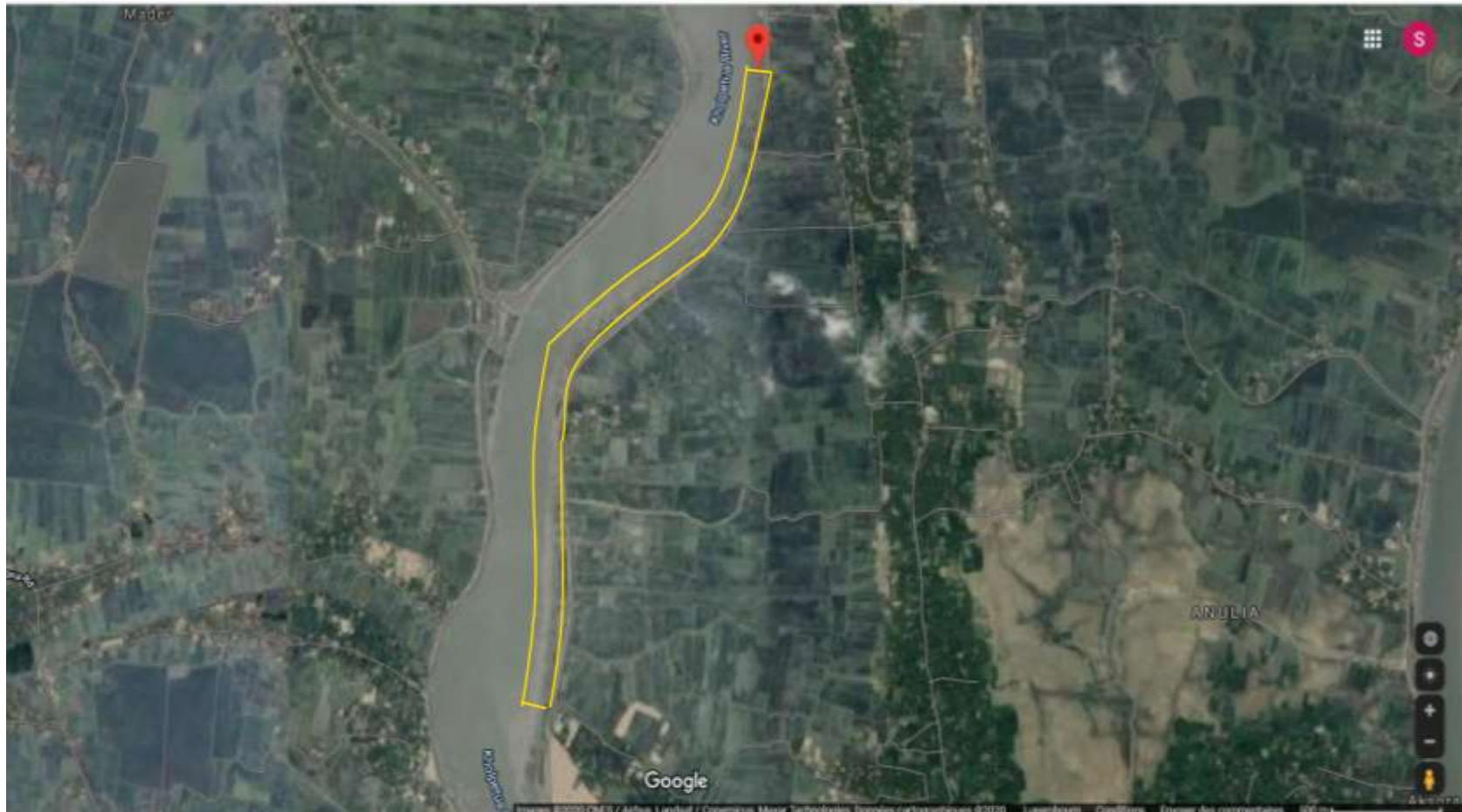
Area 7	Approximate surface (ha)	Estimated length (m)
Daspara	5	311



Area 8	Approximate surface (ha)	Estimated length (m)
Khajra Pirojpur	4	570



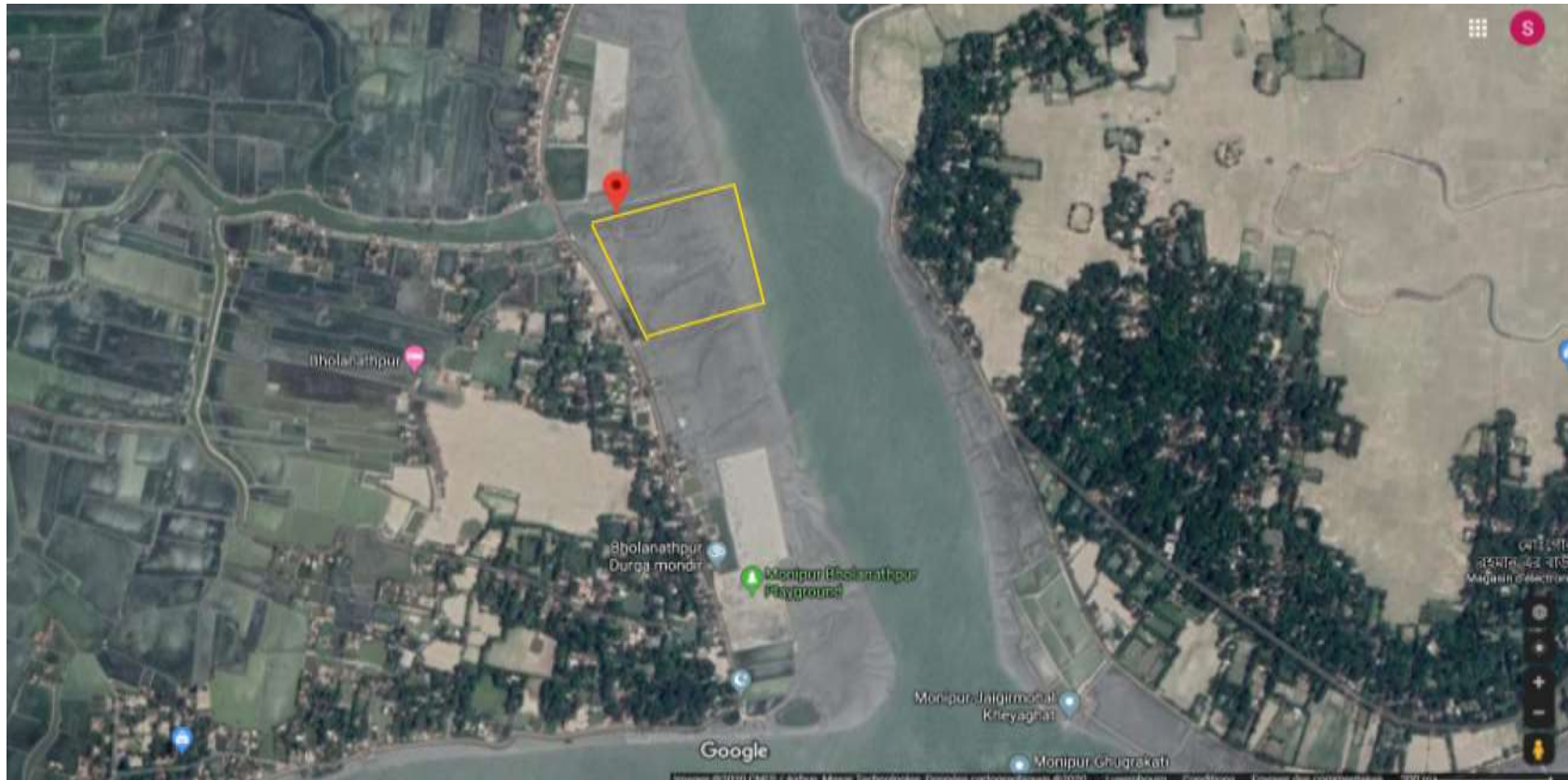
Area 9	Approximate surface (ha)	Estimated length (m)
Kakbasia	6	2871



Area 10	Approximate surface (ha)	Estimated length (m)
Aksora	5	2686



Area 11	Approximate surface (ha)	Estimated length (m)
Bholanathpur	2	193



Area 12	Approximate surface (ha)	Estimated length (m)
South Jhapa	5	1259

